



»G-mini« Series

GZ 05, GZ 06

Product features

Two-way manifolds - narrow design, with one outlet at the top and one outlet at the bottom.

Specifications / Technical data

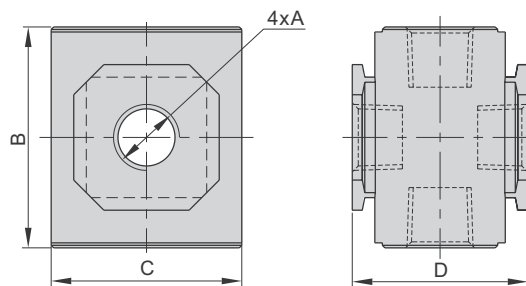
Art. No.	Size 200	
	GZ 05	GZ 06
Fluid	Air	
Port size	1/8"	1/4"
Connections	2 + 2	
Pressure range	0 to 9 bar (0 to 0.9 MPa, 0 to 130 psi)	
Proof pressure	15 bar (1.5 MPa, 215 psi)	
Temperature range	-20 to 70 °C	

Ordering information

Art. No.	Type
GZ 05, GZ 06	Two-way manifolds

Body dimensions

GZ 05, GZ 06



Art. No.	A	B	C	D
GZ 05	1/8"	36	30	28.5
GZ 06	1/4"	36	30	28.5

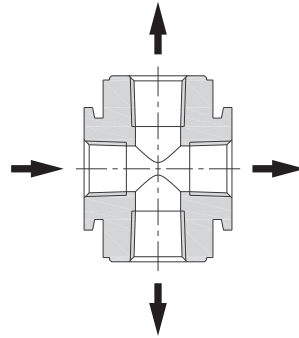
(Values in mm, exception A = inch)

»G-mini« Series




GZ 05, GZ 06

Components and materials

GZ 05, GZ 06



Accessories

	Art. No.	Type
	UB 200	Joiner without wall mounting
	LB 200	Joiner with wall mounting, 1 drilled hole
	TB 200	Joiner with wall mounting, 2 drilled holes